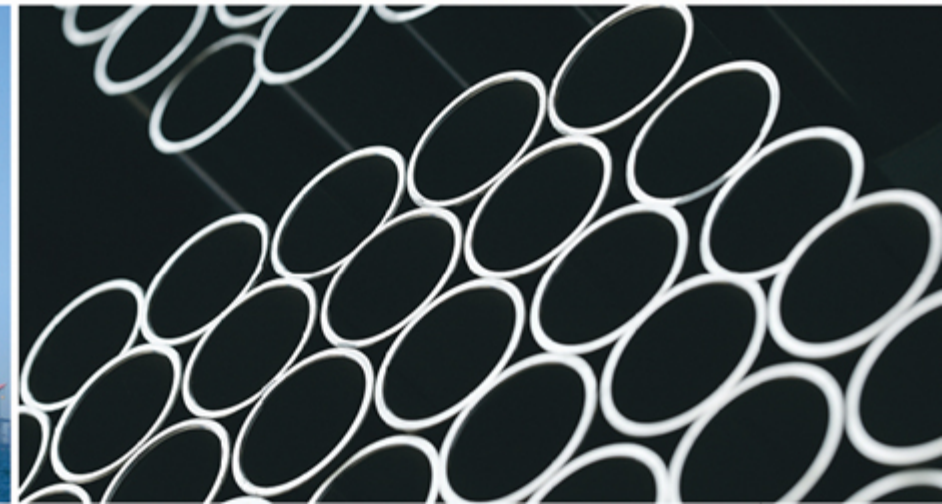
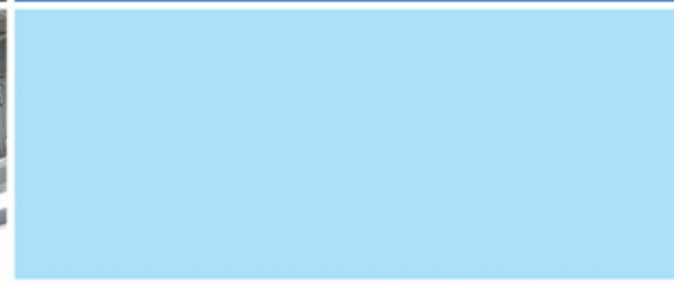




2026
2025
2024
2023
2022
2021
2020
2019
2018
2017

CORPORATE PROFILE

kumkang Kind



KUMKANG KIND

The technological link between the world and its people, is Kumkang Kind's promise!

Kumkang Kind, a manufacturer of steel pipes and construction materials is writing a new page of history as not only a domestic market leader but also as the global leader of construction material manufacturer.

From the basic foundation of steel pipes to skyscrapers, underwater tunnels, the skeleton of formwork system, scaffolds and eco-friendly modular system, Kumkang Kind connects people and the world and creates better values with quality and skills.





CONTENTS

02	KUMKANG KIND
04	WHO WE ARE
05	OUR VISION
06	OUR HISTORY
08	WHAT WE DO
16	WHERE WE OPERATE
26	HOW WE PERFORMED
32	PROJECT REFERENCES

WHO WE ARE

Korea Formwork Exporting No.1 !

Kumkang Kind as the manufacturer of steel pipes and construction materials has played an important role in the development of the Korean economy.

With the love and trust obtained from customers and those who are involved, Kumkang Kind has been giving back to the welfare of the society. Furthermore, Kumkang Kind with long years of experience will further expand its technology and quality.

Name of Company	Kumkang Kind Co., Ltd
President	Beom Ho, Lee
Capital	27 billion (KRW)
Sales	502 billion (KRW)
Employees	383 (2020)
HQ Address	110 (Dadae-dong), Dasan-ro, Saha-Gu, Busan, South Korea
Seoul Office	Kumkang Kind Bldg, 21, Saemal-ro 5-gil, Songpa-gu, Seoul, South Korea,
	Eonyang Steel Pipe, OCTG, Square Pipe
	Eumseong #1 Aluminum Formwork
	Eumseong #2 Aluminum Recycling & Extrusion
	Eumseong #3 Scaffolding
Factories	Changnyeong LNGC, Scaffolding, Special and System Form
	Jincheon #1 Modular System
	Jincheon #2 Aluminum Formwork
	Nilai (Malaysia) Aluminum Formwork



Sales

2020
KRW 502BN

2019
KRW 550BN



Export

2020
USD 76M

2019
USD 87M



Overseas
Branches

Overseas Offices
6

Overseas partners
23 in 17 countries

OUR VISION

The basis of Kumkang Kind's technology is the commitment to our customers.

Kumkang Kind with vast field-experience and technological know-how is a professional in manufacturing steel pipes and construction materials. Putting customers first, Kumkang Kind with strict management system has constantly researched and developed the best product out in the market. Kumkang Kind will further work on training talented individuals, business ethics, and business knowledge. With this in mind, Kumkang Kind will advance towards the future and continuously remain as a trusting and well respected company.

Chairman.



OUR HISTORY

As a professional manufacturer of construction materials and Steel Pipes, Kumkang Kind was established in 1979. Starting its overseas office in Malaysia in 2007, 2010 in the United States of America and in Vietnam, 2012 in India, 2017 in East Africa and in Indonesia. Kumkang Kind has achieved USD 100 Million in export and is accomplishing an eye opening development in and out of Korea.



1979. 08 Establishment of Kumkang Kind



1989. 06 Completion of Banwol Factory



1990. 01 Completion of Eonyang Factory



1992. 01 Completion of Busan Factory



2005. 11 Obtained Korea Industrial as subsidiary



2006. 12 Completion of EumSeong Factory

1979~1989 Establishment of Kumkang Kind

As the manufacturer of steel pipes and formwork system Kumkang Kind continuously grew and publicly shared its shares on the Korean Stock Exchange Market in September 10th, 1988.

1990~1999 Expansion of Domestic market

Kumkang Kind quickly expanded its production capacity and won the Prime Minister's Award for achieving USD 10 Million in exports.



2007. 09 Established KumKang Kind Malaysia



2009. 10 Completed Nilai Factory Malaysia



2010. 06 Establishment KumKang Kind Vietnam



2012. 10 Establishment KumKang Kind India



2014. 12 Achieved US 100 million in exports



2015. 03 Opened Changnyeong Factory



2017. 02 Establishment KumKang Kind East Africa



2017. 03 Establishment KumKang Kind Indonesia

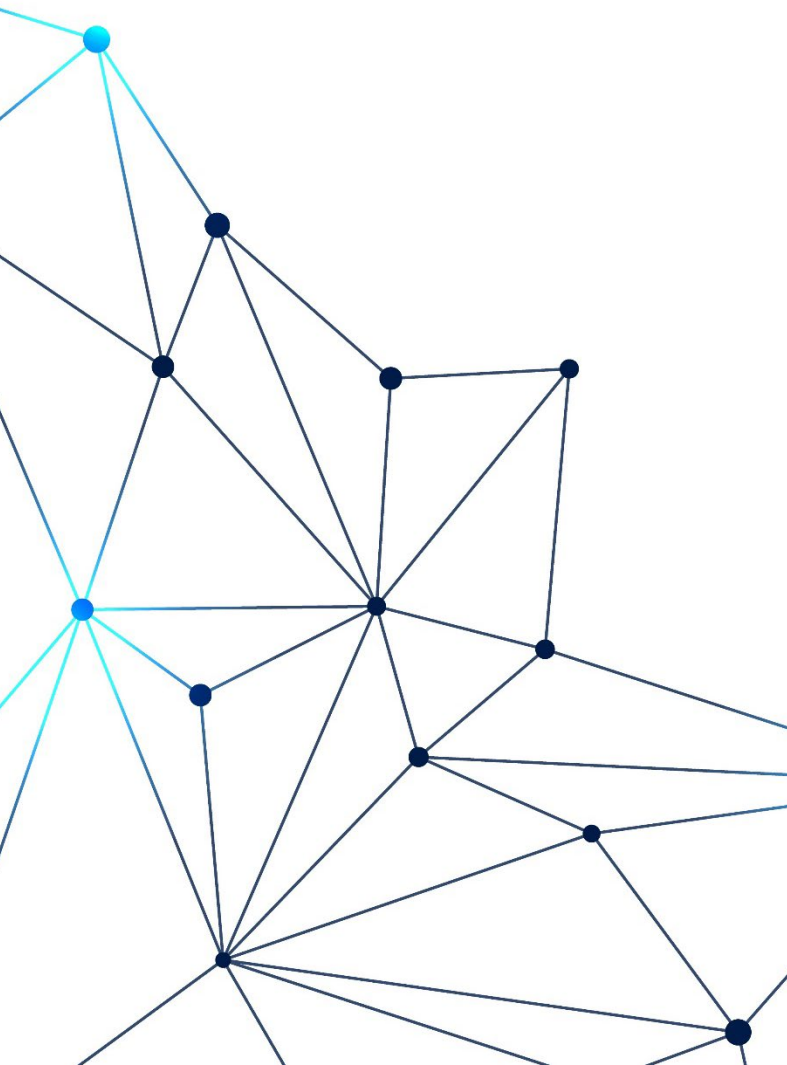
2000~2009 Challenge to become a Global Company

After obtaining KumKang Information System Co., Ltd and Evercos Co.,Ltd, KumKang Kind expanded its business in a various way. In 2007, KumKang Kind established KumKang Kind Malaysia and to further expand established its factory in Nilai, Malaysia in 2009.

2010~Now Number 1 Exporter of Formwork

Continuous establishment of KumKang Kind overseas subsidiaries in the US, Vietnam, India, East Africa and in Indonesia, KumKang Kind achieved to be the first formwork system manufacturer to achieve US\$100 million in exports.

WHAT WE DO



FORMWORK SYSTEM



Provide the highest quality formwork solutions, we analyze the customer's needs precisely to choose the most efficient formwork system from complete product design optimized for site condition.

Aluminum Recycling



From the melting process of the aluminum ingot and recycled aluminum to the extrusion process, we are making consistent efforts to create environment friendly value.

STEEL PIPE



OCTG, ordinary and general structural purpose pipe which are produced with a diameter ranging from 1/2” to 8”, are precisely formed, welded with high-frequency electric resistance and cooled by Kumkang Kind’s advanced computerized system.

SCAFFOLD & SHORING



With exhaustive field experience, we offer you best scaffold and shoring materials available on the market. In order to produce the most secure and reliable products, we are using high-strength steel material with special galvanizing method to reinforce its durability.

MODULAR UNIT SYSTEM



By applying a standard method of design, Kumkang Kind produces an effective structural unit. 80% are finished at the factory and only 20% work will be done at site. Kumkang Kind is always pushing its limit to assemble the modular system, Faster and safer.

FORMWORK SYSTEM

The most important aspect of a successful structural construction is the formwork system. Kumkang Kind will always offer you the most trustful, safe, and up-to-date formwork system technology available on the market. Kumkang Kind formwork system is based on worldwide field experience and accumulated technical know-hows. Whatever customers need, we will always fulfill their demands with the most appropriate system. With our R&D department continuously researching for newer and better products. We will maintain our position as the leader of formwork system against our competitors.





Aluminum Formwork System

The most important aspect of a successful structural construction is the formwork system. Kumkang Kind will always offer you the most trustful, secure, efficient, and cutting edge of formwork system technology available on the market.



Climbing System

Based on creative technology, we, Kumkang Kind, are doing our best to provide the optimal system to our customers. Kumkang Kind will create a new era of formwork system in the global market.



Civil Engineering Formwork System

With stored technical background, Kumkang Kind is providing formwork engineering consulting service on apartment, multi-plex, bridgeworks, dams, and other storing facilities on both infrastructure and architectural structures.



Gang Formwork System

Made of mild steel, working platform is attached to the formwork, which will increase jobsite workers' safety. Through the gang-form, the concrete finishing will be unbeatable while providing a safe working environment to workers and reduce construction period.

ALUMINUM RECYCLING

Recycling is a core business operation in the aluminum formwork industry. Without billet, it is impossible to have extrusions which will directly affect the production and delivery of aluminum formwork. Thus, Kumkang Kind has newly invested in a billet casting facility in 2015. This facility allows Kumkang Kind to be self-sufficient and procure aluminum in either ingot or scrap form. Our new business will diversify our aluminum supply base and avoid any delays in delivery to our clients.



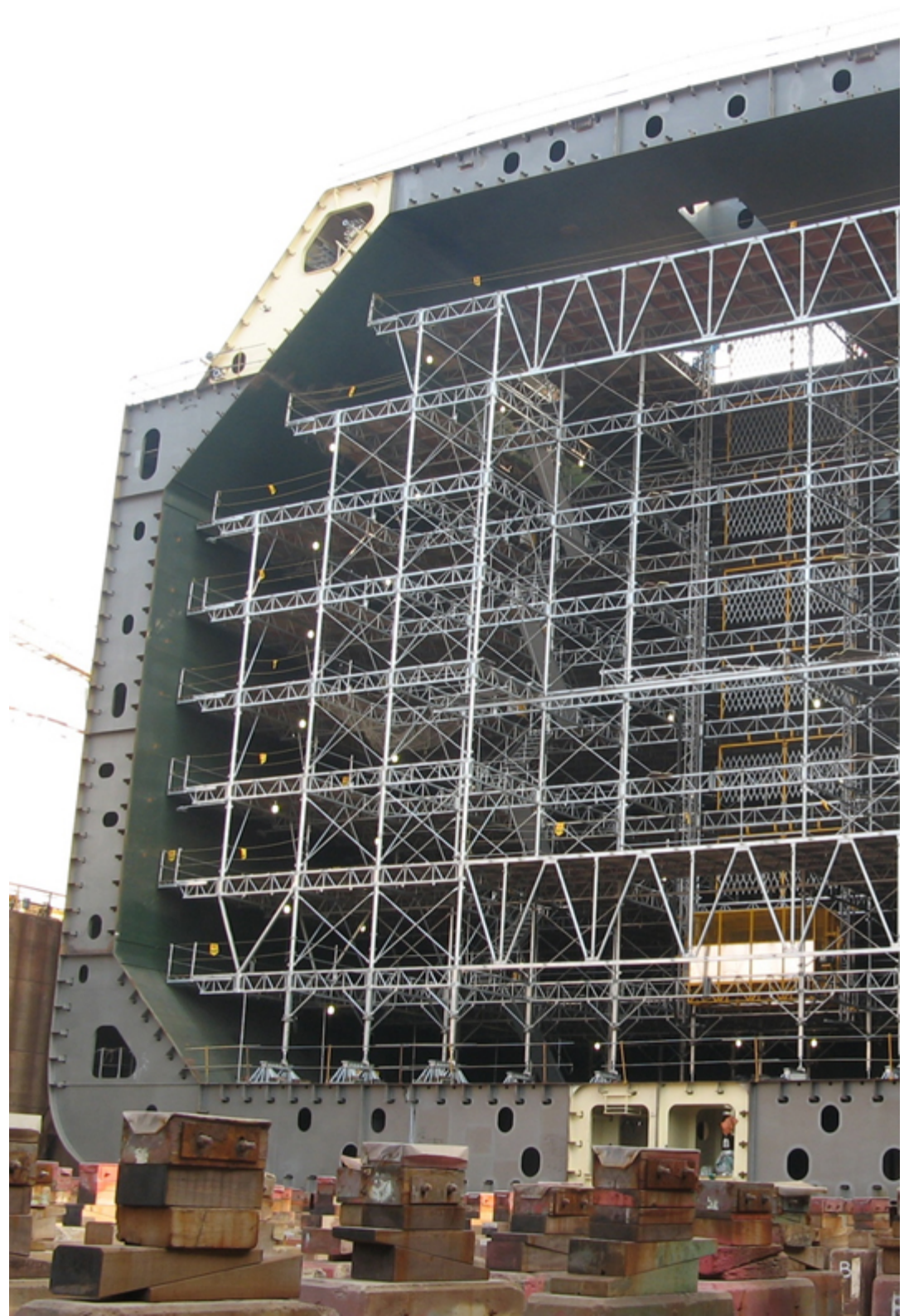
STEEL PIPE

Kumkang Kind plays a key role in steel pipe industry to produce various types of pipes ; OCTG casing and tubing, line pipe, structural pipe, automobile and electric wiring. Furthermore, Kumkang Kind's steel pipes have been certified with KS, JIS, KR, Lloyd's Register, GL and various other international standards. Thus, Kumkang Kind is renowned for its impeccable quality in the steel pipe industry.



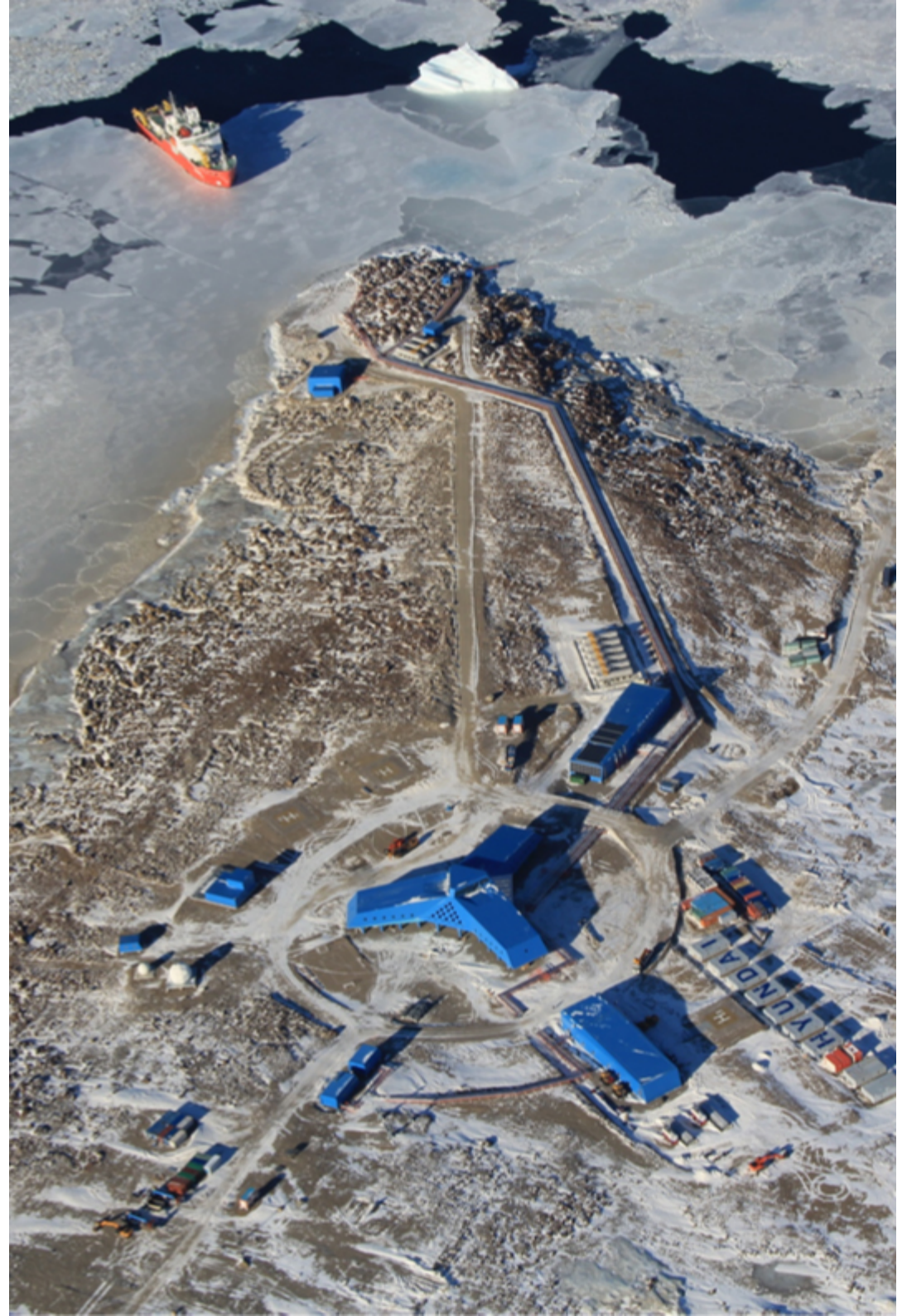
SCAFFOLD & SHORING

Kumkang Kind's support and scaffolding products use high-strength steel materials with a special galvanizing method to reinforce its durability. Our scaffolding products are also used in the shipbuilding industry. They are used in building the inner part of the L.N.G.C. (liquefied natural gas carrier) and our products' efficiency is unbeatable.

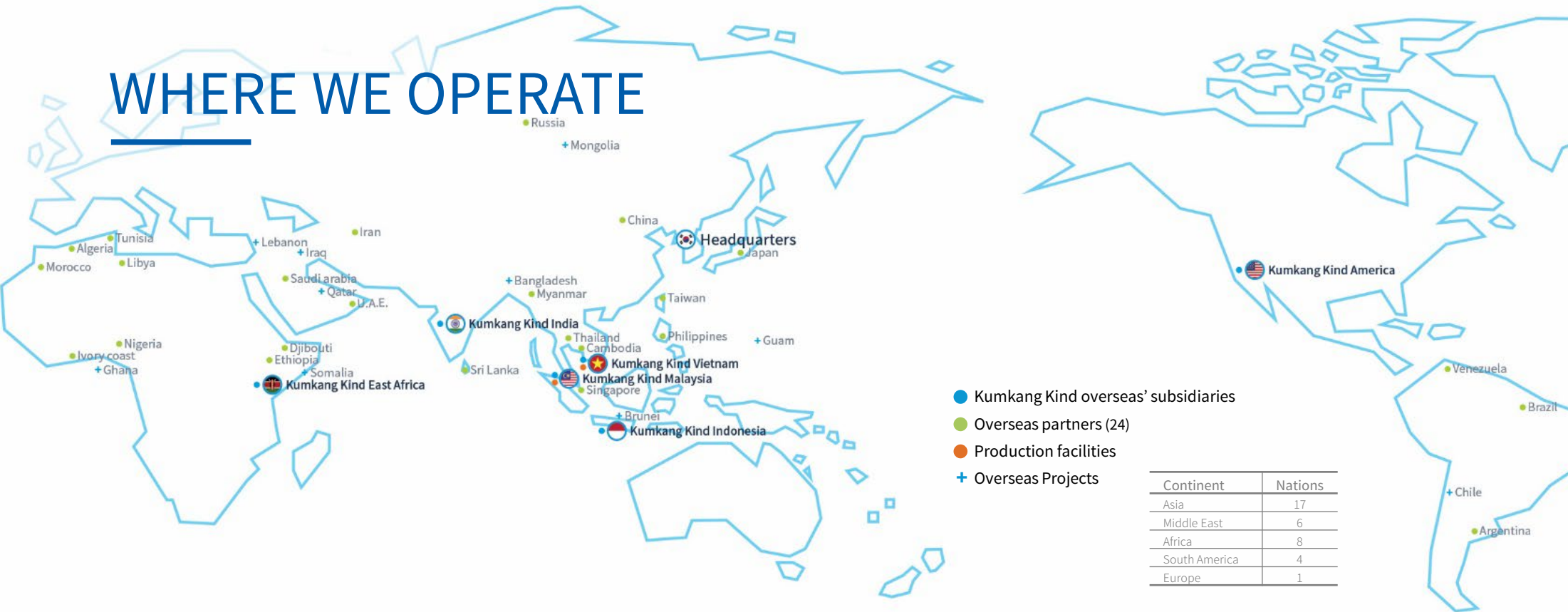


MODULAR UNIT SYSTEM

The Modular System is a technology where human and the nature coexists together. Our modular system is fast, economical, high quality, ecofriendly, flexible, diverse, and Safe. Kumkang Kind maximizes these benefits through the KMC construction method.



WHERE WE OPERATE



Kumkang Kind East Africa

Office 5, 4th Floor, Tower 1, The Mirage
Chiromo Rd., Westlands, Nairobi, Kenya
T.254-2-0250-0882
kkafrica@kumkangkind.com

Kumkang Kind India

Office no.105, 1st floor, Sky Vista BLDG, near Town
Square Dorabjee, Viman Nagar, Pune - 411 014
Maharashtra India
T.91-20-6647-3800
kkindia@kumkangkind.com

Kumkang Kind Malaysia

B-9-01, Block B, Oasis Square No.2, Jalan PJU
1A/7A Ara Damansara 47301 Petaling Jaya
Selangor Darul Ehsan, Malaysia
T.60-3-7831-0488 F.60-3-7831-2588
kkmalaysia@kumkangkind.com

Kumkang Kind Vietnam

9th, Beautiful Saigon Bldg., 02 Nguyen Khac Vien St,
District 7, Ho Chi Mihn City, Vietnam
T.84-8-5413-6508 F.84-8-5413-6507
kkvietnam@kumkangkind.com

Kumkang Kind Indonesia

Gedung Wisma Slipi Unit 801, Jl..Let. Jend.
S. Parman Kav. 12 Jakarta, Indonesia
T.62-812-9781-5600
kkindonesia@kumkangkind.com

Kumkang Kind America

1215 W. Imperial HWY., Ste 216 Brea,
CA 92812 USA
T.1-714-278-9089 F.1-714-494-8032

Domestic



● Production facilities

Eumseong #1 _ Aluminum Formwork

505, Yonggwang-ro, Eumseong-eup, Eumseong-gun, Chungcheongbuk-do, Korea

Eumseong #2 _ Extrusion

369-843 Osaeng-ri Saenggeuk-myeon, Eumseong-gun, Chungcheongbuk-do, Korea

Eumseong #3 _ Scaffold

428-55, daedong-ro, Daeso-myeon, Eumseong-gun, Chungcheongbuk-do, Korea

Jincheon #1 _ Modular System

48-1 Nowon-ri, Iwol-myun, Jincheon-gun, Chungcheongbuk-do, Korea

Jincheon #2 _ Aluminum Formwork

27-29, Sincheokseo-gil, Deoksan-myeon, Jincheon-gun, Chungcheongbuk-do, Korea

Eonyang _ API OCTG, Steel pipe

59, Bangudae-ro, Samnam-myun, Uljoo-gun, Ulsan, Korea

Changnyeong _ Special Formwork

Gwanggyemaeul-gil, Gyeseong-myeon, Changnyeong-gun, Gyeongsangnam-do, Korea

● Offices

Seoul Office

Kumkangkind. Bldg, 1445-2, Seocho-dong, Seocho-ku, Seoul

Gwangju Office

Office No.602, Solomon tower, 97, Cheomdannyeonsin-ro, Buk-gu, Gwangju, Korea

Daegu Office

Office No.213, Taewang honors tower, 241, Palgong-ro, Dong-gu, Daegu, Korea

Busan Office

8F, Nulwon Bldg., 134, Jaseong-ro, Dongbu-ro 24-gil, Dong-gu, Busan, Korea

Production facilities



- **Eumseong #1 Factory**

Address	505, Yonggwang-ro, Eumseong-eup, Eumseong-gun, Chungcheongbuk-do
Size	150,000 m ²

Production	1,360,000 m ² /year
Products	Aluminum Formwork

Production facilities



● Eumseong #2 Factory

Address	1994, Daegeum-ro, Saenggeuk-yeon, Eumseong-gun, Chungcheongbuk-do
Size	42,000 m ²

Production	26,000 ton/year
Products	Aluminum Extrusion

Production facilities



- Eumseong #3 Factory

Address	428-55, daedong-ro, Daeso-myeon, Eumseong-gun, Chungcheongbuk-do, Korea
Size	30,000 m ²

Production	9,300 ton/year
Products	Scaffolding

Production facilities



● Jincheon #1 Factory

Address	515, Jingwang-ro, Iwol-myeon, Jincheon-gun, Chungcheonbuk-do, Korea
Size	23,000 m ²

Production	1,400 ea/year
Products	Modular System

Production facilities



● Jincheon #2 Factory

Address	27-29, Sincheokseo-gil, Iwol-myeon, Jincheon-gun, Chungcheongbuk-do
Size	62,600 m ²

Production Products	600,000 m ² /year Aluminum Formwork
------------------------	---

Production facilities



● Changnyeong Factory

Address	149-16, Gwanggyemaoul-gil, Gyeseong-myeon, Changnyeong-gun, Gyeongsangnam-do
Size	72,801m ²

Production	12,000 ton/year
Products	LNGC, Scaffolding, Special and System Form

Production facilities



- Eonyang Factory

Address	359, Bangudae-ro, Samnam-myeon, Ulju-gun, Ulsan	Production	180,000 ton/ year
Size	45,500 m ²	Products	Hot galvanized, Black steel pipe, square pipe, primer coated pipe, conduit pipe, structural pipe for exports, OCTG

Production facilities



● Nilai Factory

Address	Lot 119 & 120, Jalan Permata 1/4, Arab Malaysian Industrial Park, 71800 Nilai, Negeri Sembilan Darul Khusus, Malaysia	Production Products	130,000 m ² /year Aluminum Formwork
Size	30,350 m ²		

HOW WE PERFORMED

Kumkang Kind operates all over the world, having its offices in United States, Malaysia, Vietnam, India, East Africa and Indonesia. Also, through our overseas partners and agents in Japan, China, Singapore, Middle East, North Africa and South America, we export our steel pipes, formwork, scaffolding and many other construction materials to over 30 different countries.

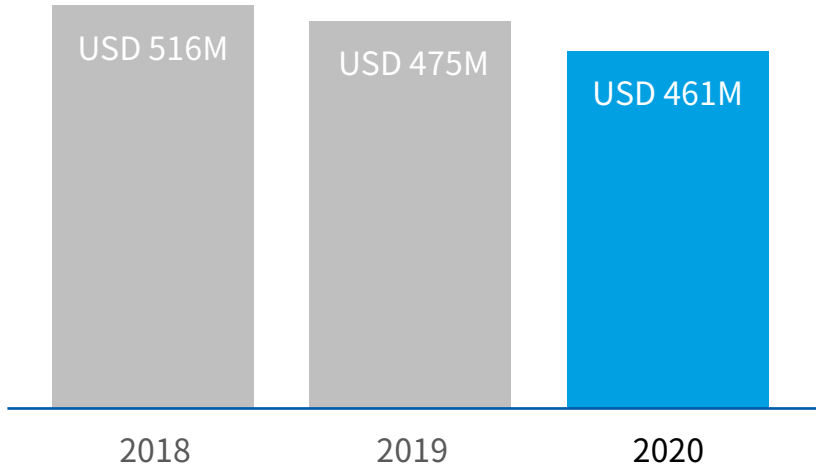
Kumkang Kind prepares to be a global leading company through continuous R & D and technological improvement. Kumkang Kind is committed to strengthening and expanding into new market and into new sector of business.



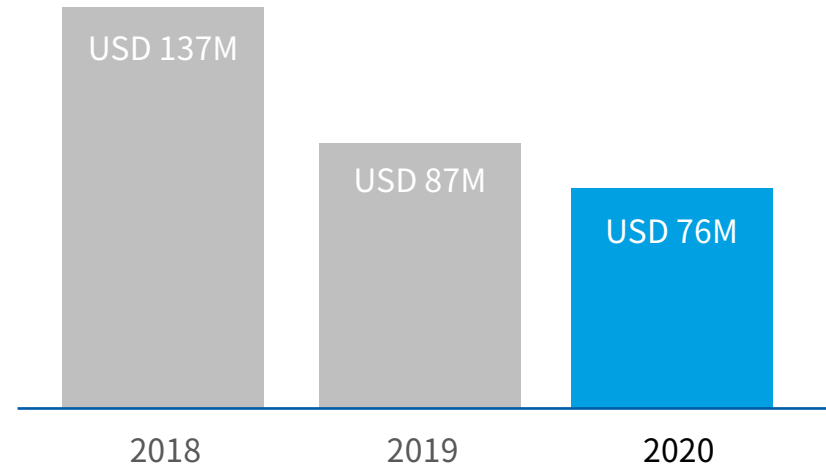
Overseas 16%
USD 76M

Domestic 84%
USD 385M

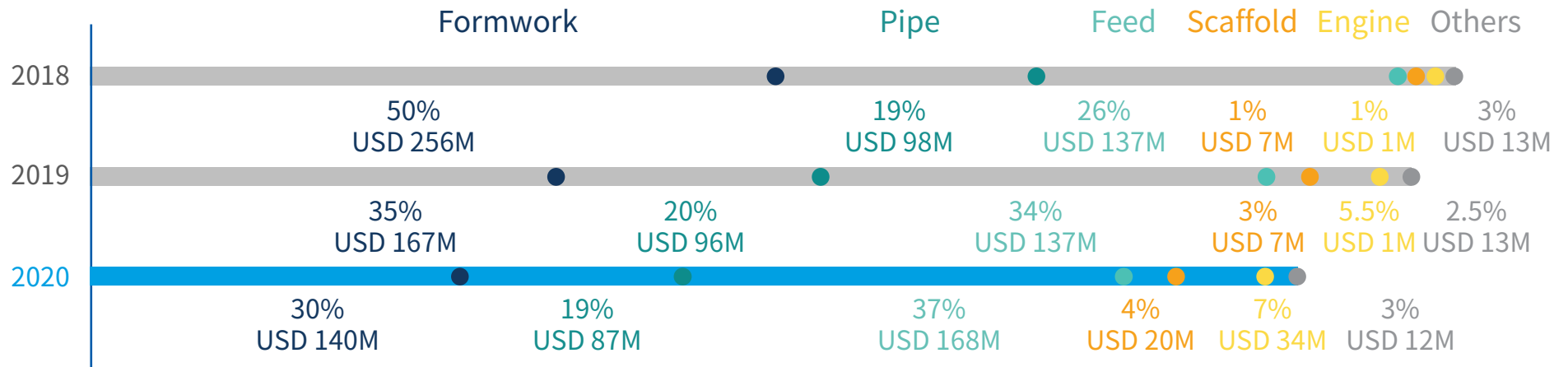
Sales Figure



Export Figure



Sales by Item Ratio



Summary of Consolidated Statement of Financial Position

Unit: Million KRW

Category		2018	2019	2020
Statement of Financial Position	Total Asset	852,849	834,006	779,160
	Liquid Asset	362,894	388,611	306,846
	Non-current Asset	489,954	445,395	472,314
	Total Liability	498,613	488,064	425,895
	Liquid Liability	422,318	444,240	352,305
	Non-current Liability	76,295	43,824	73,590
	Total Ownership Interest	354,235	345,942	353,265
	Paid in capital	24,870	25,012	27,273
	Retained Earning	329,365	320,930	325,992
Income Statement	Turnover	567,908	549,728	501,933
	Sales Cost	465,490	464,089	432,662
	Distribution & Maintenance Cost	77,101	83,019	70,729
	Profit	25,318	2,620	-1,457
	Financial Profit and Loss	-8,518	-10,890	-9,626
	Other Profit and Loss	6,476	5,897	14,260
	Income Tax Expenses	8,403	2,578	879
	Net Income	14,872	-4,952	2,298

Summary of Additional Statement of Financial Position

Unit: Million KRW

Category		2018	2019	2020
Statement of Financial Position	Total Asset	618,603	592,458	515,113
	Liquid Asset	236,990	277,154	181,245
	Non-current Asset	381,613	315,304	333,869
	Total Liability	353,355	335,331	266,416
	Liquid Liability	297,983	312,741	215,866
	Non-current Liability	55,372	22,590	50,550
	Total Ownership Interest	265,248	257,127	248,697
	Paid in capital	24,870	25,012	27,273
	Retained Earning	240,378	232,115	221,424
Income Statement	Turnover	392,478	321,519	251,476
	Sales Cost	333,288	277,913	227,397
	Distribution & Maintenance Cost	45,447	46,372	44,342
	Profit	13,744	-2,766	-20,263
	Financial Profit and Loss	-7,530	-7,119	-6,547
	Other Profit and Loss	7,749	3,431	2,333
	Income Tax Expenses	3,120	-343	6,406
	Net Income	10,842	-6,797	-18,071

Major Affiliated Companies

Listing status	Number of companies	Company
Listed Company	3	Kumkang Kind Co., Ltd.
		Korea Industrial Co., Ltd.
		KSP Co., Ltd.
Unlisted Company(Korea)	10	Dong Suh Chemical Co., Ltd.
		MDL Co., Ltd
		Busan Chungkwa Co., Ltd.
		D&A Co., Ltd.
		Agricultural Company Goryeo Co., Ltd.
		Joongwon Engineering Co., Ltd.
		Gimhae Supply terminal Co., Ltd
		Korea Capital Loan Co., Ltd.
		Agricultural Company Changnyeong Co., Ltd.
		Dong Suh Paint Co., Ltd.
Unlisted Company(Overseas)	10	KUMKANG KIND(M) SDN,BHD
		KUMKANG KIND U.S.A., INC
		KUMKANG KIND VIETNAM CO.,LTD.
		KUMKANG KIND INDIA PRIVATE LIMITED.
		KUMKANG KIND EAST AFRICA LIMITED
		PT.KUMKANG KIND ENGINEERING INDONESIA
		PT.DONGSUH INDONESIA
		HAPPY FARM DALAT CO.,LTD.
		PT KRAKATAU POS-CHEM DONG-SUH CHEMICAL
		PT.NEXCO INDONESIA

Unit: Thousand KRW

Company	Business	Location	Sales
Kumkang Information System Co., Ltd.	Software development	Republic of Korea	1,549,247
KUMKANG KIND (M) SDN. BHD	Manufacturing Aluminum formwork, Sales and Rent	Malaysia	37,221,643
KUMKANG KIND U.S.A., INC	Sales of Steel Pipe	United States of America	311,533
KUMKANG KIND (VIETNAM) CO., LTD	Aluminum formwork Sales	Vietnam	6,292,441
KUMKANG KIND INDIA PRIVATE LIMITED	Aluminum formwork Sales	India	2,607,093
KUMKANG KIND EAST AFRICA LIMITED	Aluminum formwork Sales	Kenya	225,590
PT.KUMKANG KIND ENGINEERING INDONESIA	Aluminum formwork Sales	Indonesia	1,976,022
Korea Industrial Co., Ltd.	Assorted Feed Production Sales	Republic of Korea	183,906,293
D&A Co., Ltd.	Gene Analysis	Republic of Korea	754,760
Agricultural Company Goryeo Co., Ltd.	Meat Processing	Republic of Korea	420,620
Agricultural Company Changnyeong Co., Ltd.	Livestock industry	Republic of Korea	1,493,939
Korea Capital Loan Co., Ltd.	Other Credit Financial Business	Republic of Korea	-
Busan Chungkwa Co., Ltd.	Agricultural Products Sales on Consignment Basis	Republic of Korea	5,271,869
HAPPY FARM DALAT Co., LTD	Agricultural Products Sales on Consignment Basis	Vietnam	129,452
KSP Co., Ltd.	Manufacturing Engine Valve	Republic of Korea	39,437,590

PROJECT REFERENCES



W
(Republic of Korea)



NAVER
(Republic of Korea)



Janbogo
Antarctic
Research
Center



Geoga Grand Bridge
(Republic of Korea)

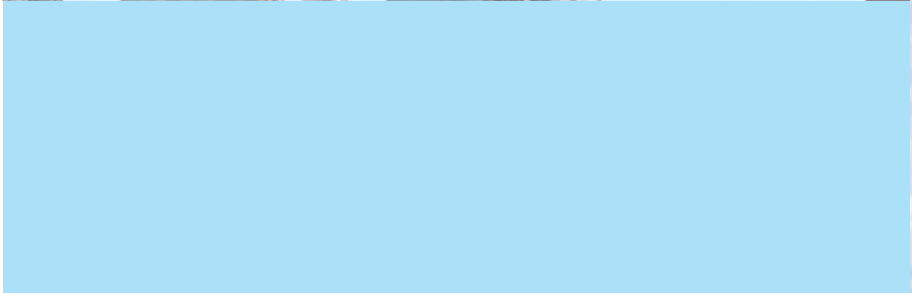
PROJECT REFERENCES



KLCC Tower
(Malaysia)

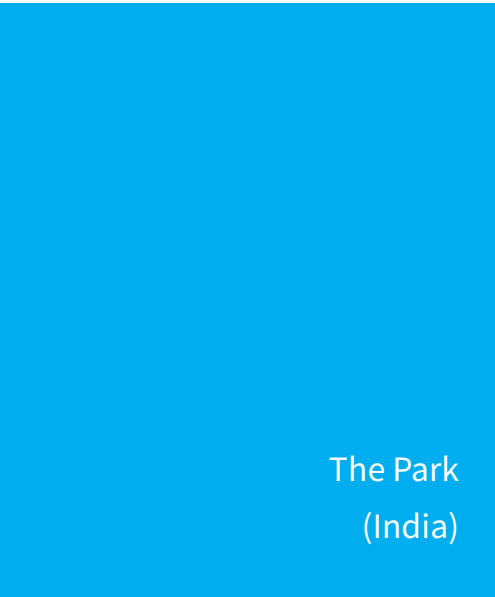


PNB 118
(Malaysia)



Kerjaya
(Malaysia)

PROJECT REFERENCES



The Park
(India)



Napa Valley
(India)

Monte south
(India)

PROJECT REFERENCES

Landmark 81
(Vietnam)



Kumho Asiana Plaza
(Vietnam)



Hanoi
Landmark
Tower
(Vietnam)

PROJECT REFERENCES



The Elements
(Indonesia)



Pollux
(Indonesia)

PROJECT REFERENCES



Unity Gardens
(Kenya)

100 + 150 logements LPA
(Algeria)

JW Marriott Hotel
(Libya)



PROJECT REFERENCES



Shapoorji Pallonji Abraj Quartier
(Doha, Qatar)

Madinat Al Wouroud
(Saudi Arabia)

Royal Atlantis
(Dubai, U.A.E.)



PROJECT REFERENCES



Jabercauseway
(Kuwait)

5JJ (52 | 42)
(Dubai, U.A.E.)



Insha Affordable Housing
Development
(Doha, Qatar)



PROJECT REFERENCES



Marina Bay Financial Center R2 (Singapore)

Row House (Philippines)



Tsubaki Hotel Guam (Guam)

PROJECT REFERENCES

Sky Garden
(Mongolia)



Capitol Twinpeaks
(Sri Lanka)



Admir Residential
(Lebanon)



PROJECT REFERENCES



ZHOUYUE ZHONGHUAN
(China)



